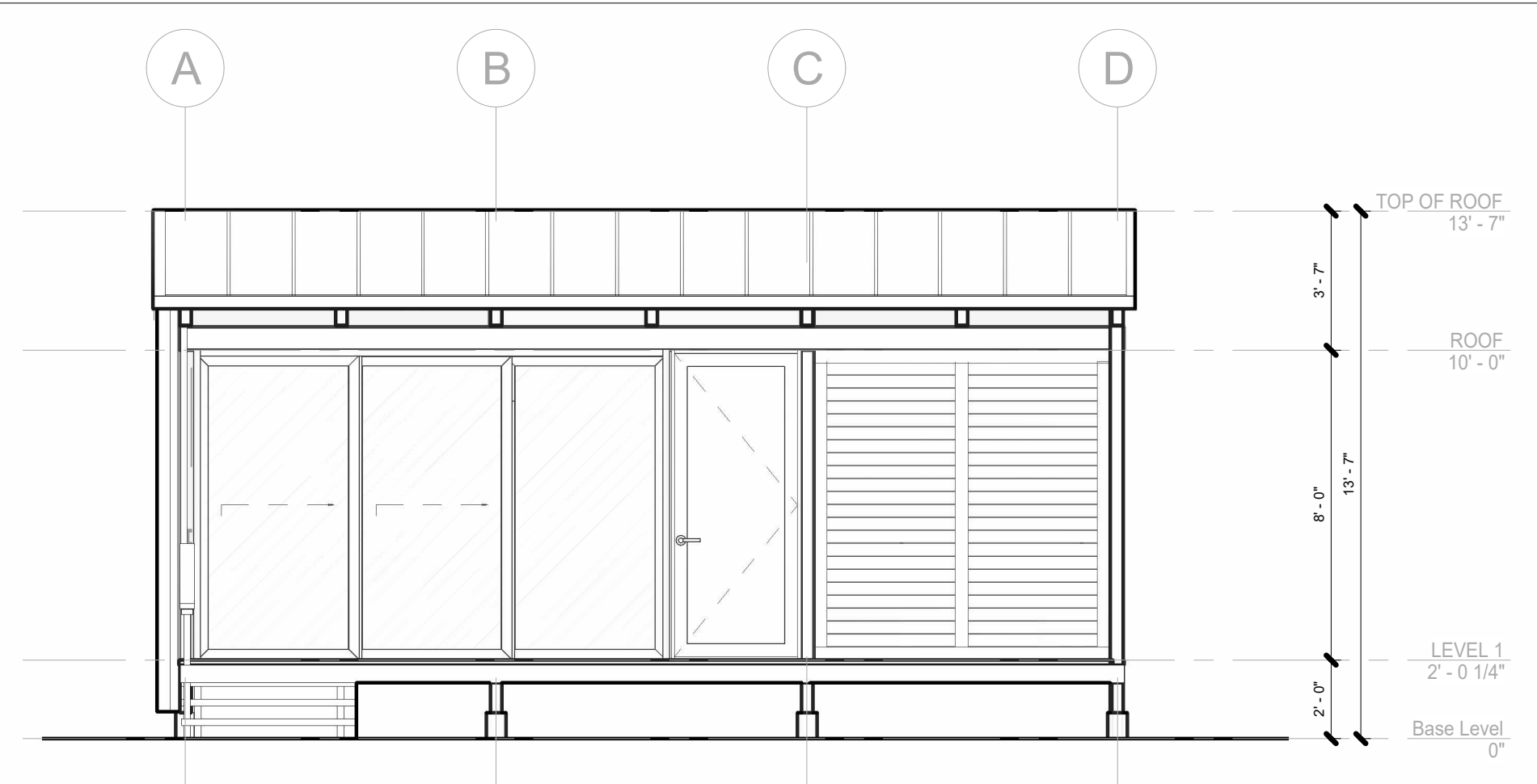
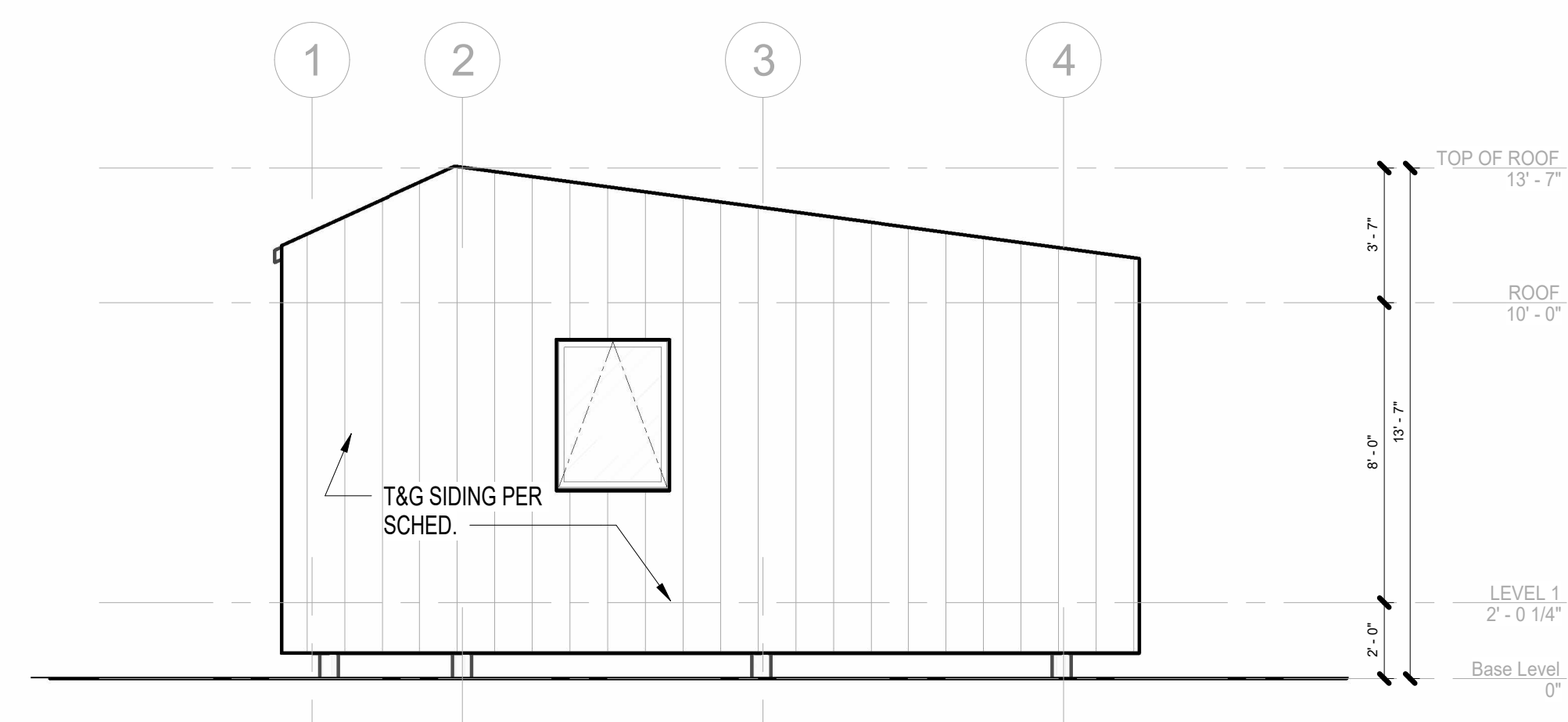


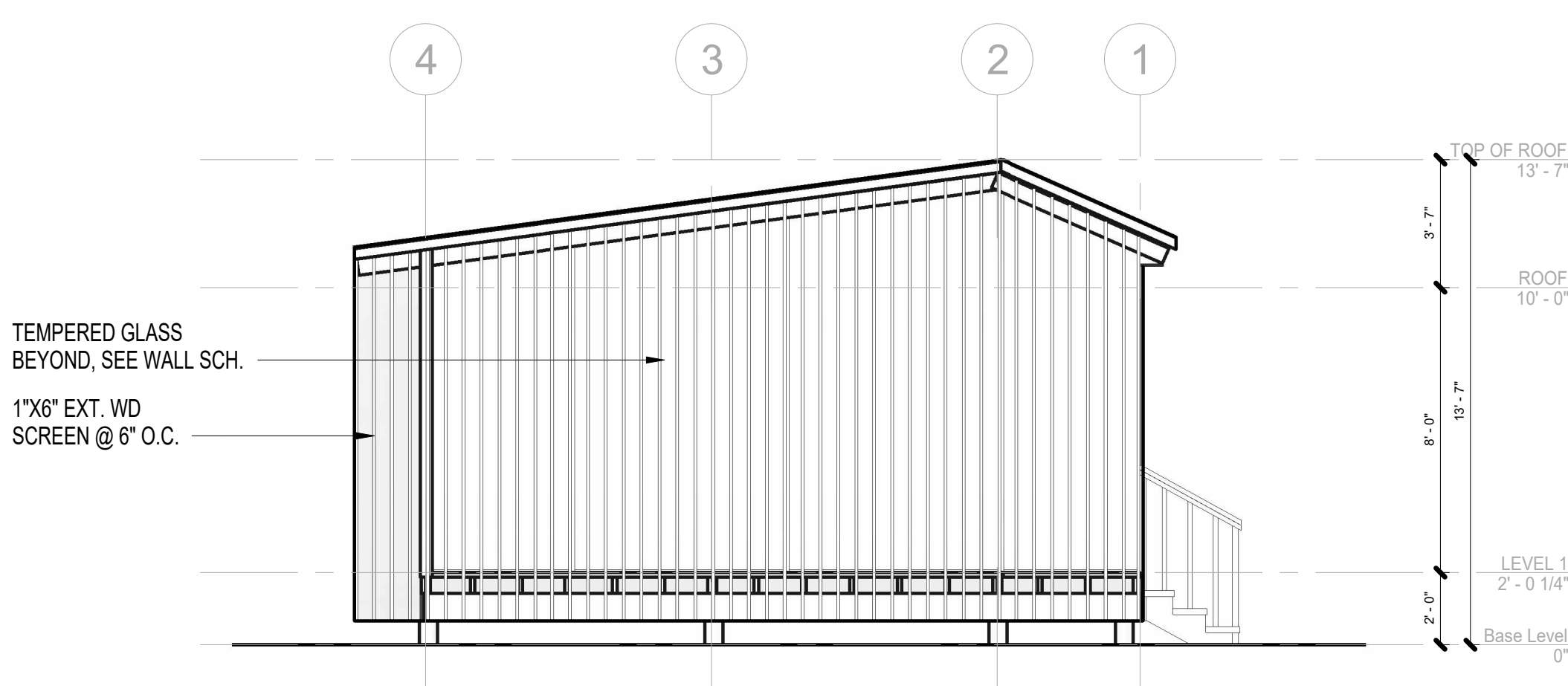
1 ELEVATION - NORTH
1/4" = 1'-0"



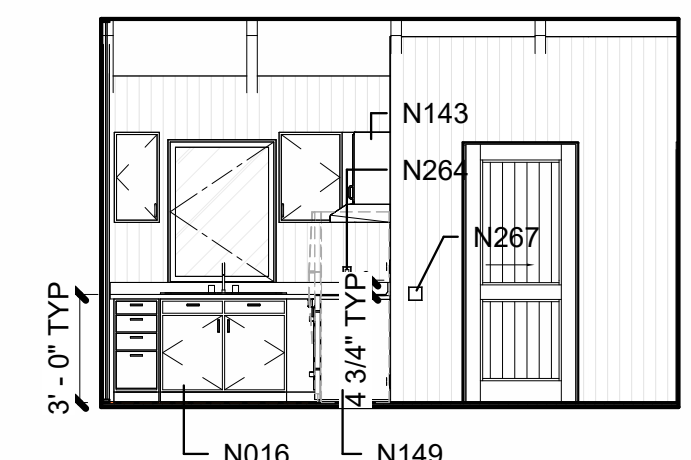
2 ELEVATION - SOUTH
1/4" = 1'-0"



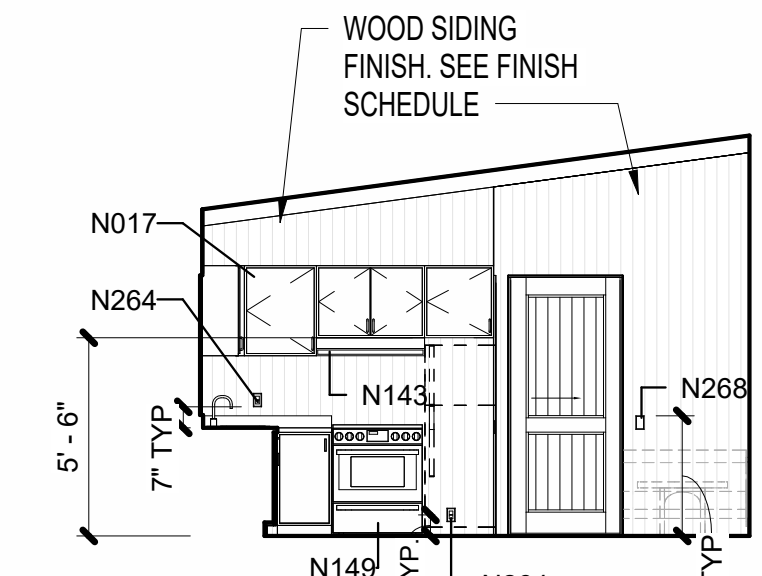
3 ELEVATION - EAST
1/4" = 1'-0"



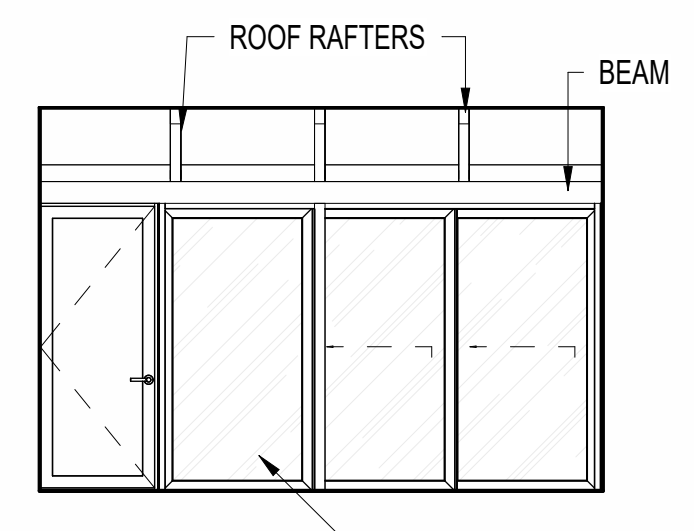
4 ELEVATION - WEST
1/4" = 1'-0"



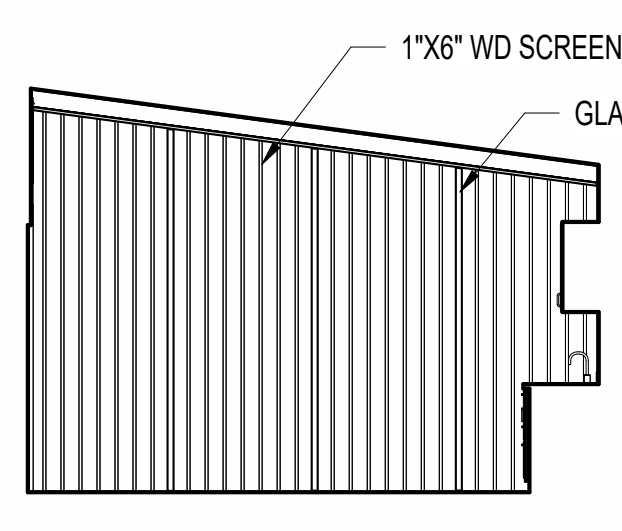
6 LIVING A
3/16" = 1'-0"



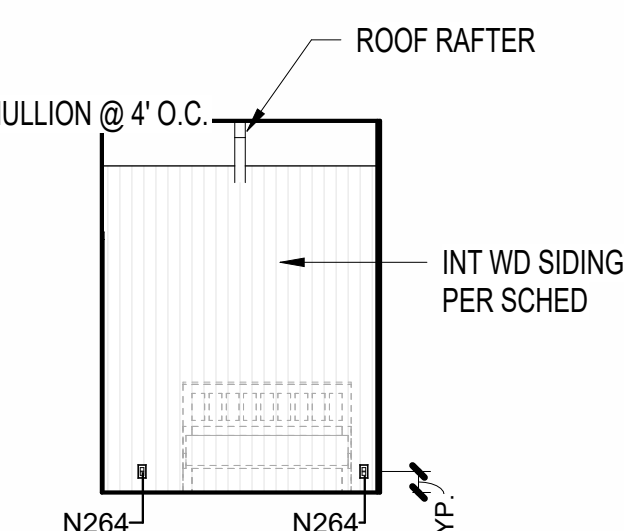
7 LIVING B
3/16" = 1'-0"



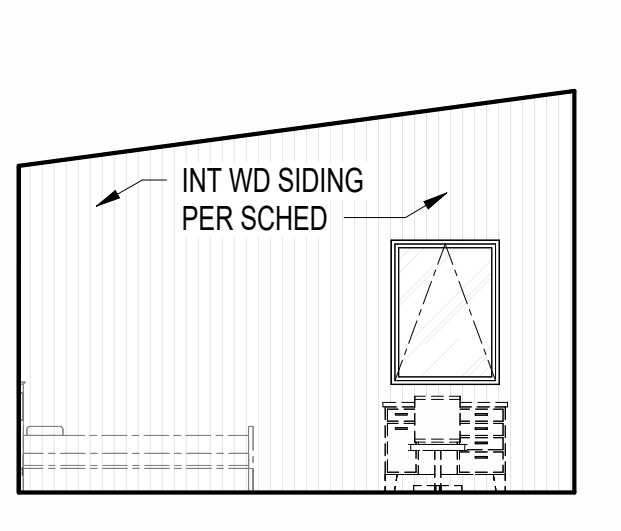
8 LIVING C
3/16" = 1'-0"



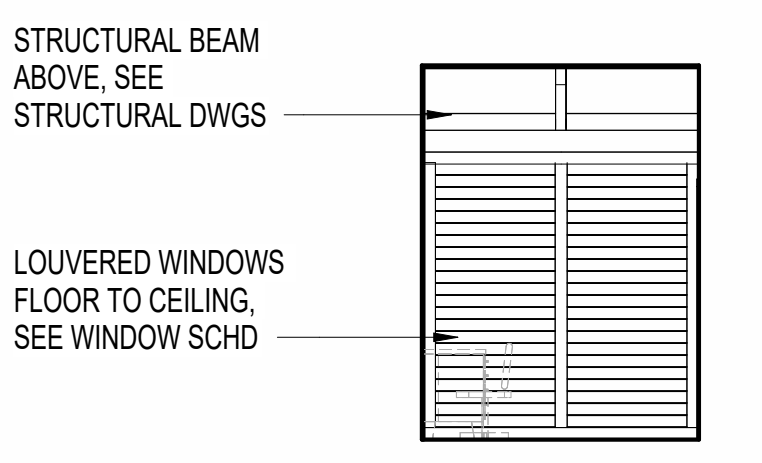
9 LIVING D
3/16" = 1'-0"



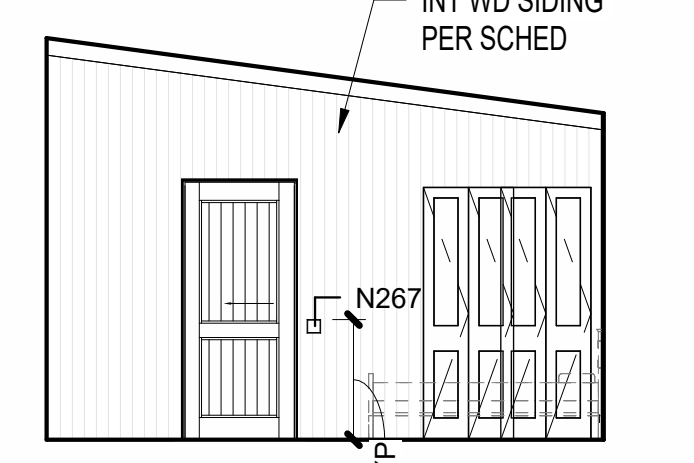
10 BED A
3/16" = 1'-0"



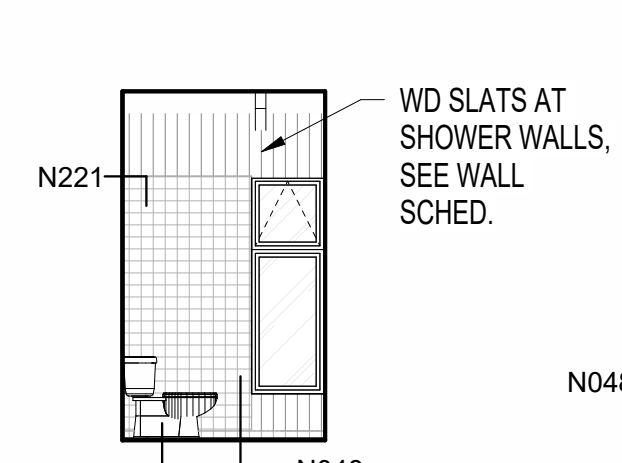
11 BED B
3/16" = 1'-0"



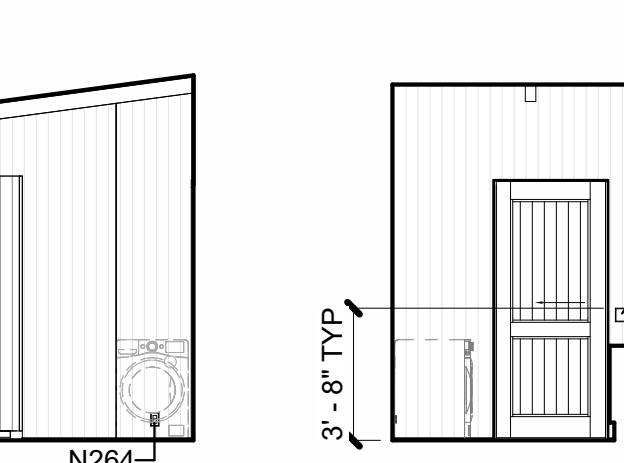
12 BED C
3/16" = 1'-0"



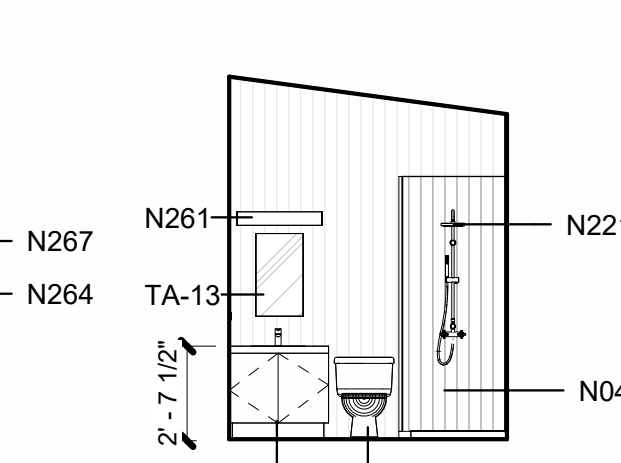
13 BED D
3/16" = 1'-0"



14 BATH A
3/16" = 1'-0"



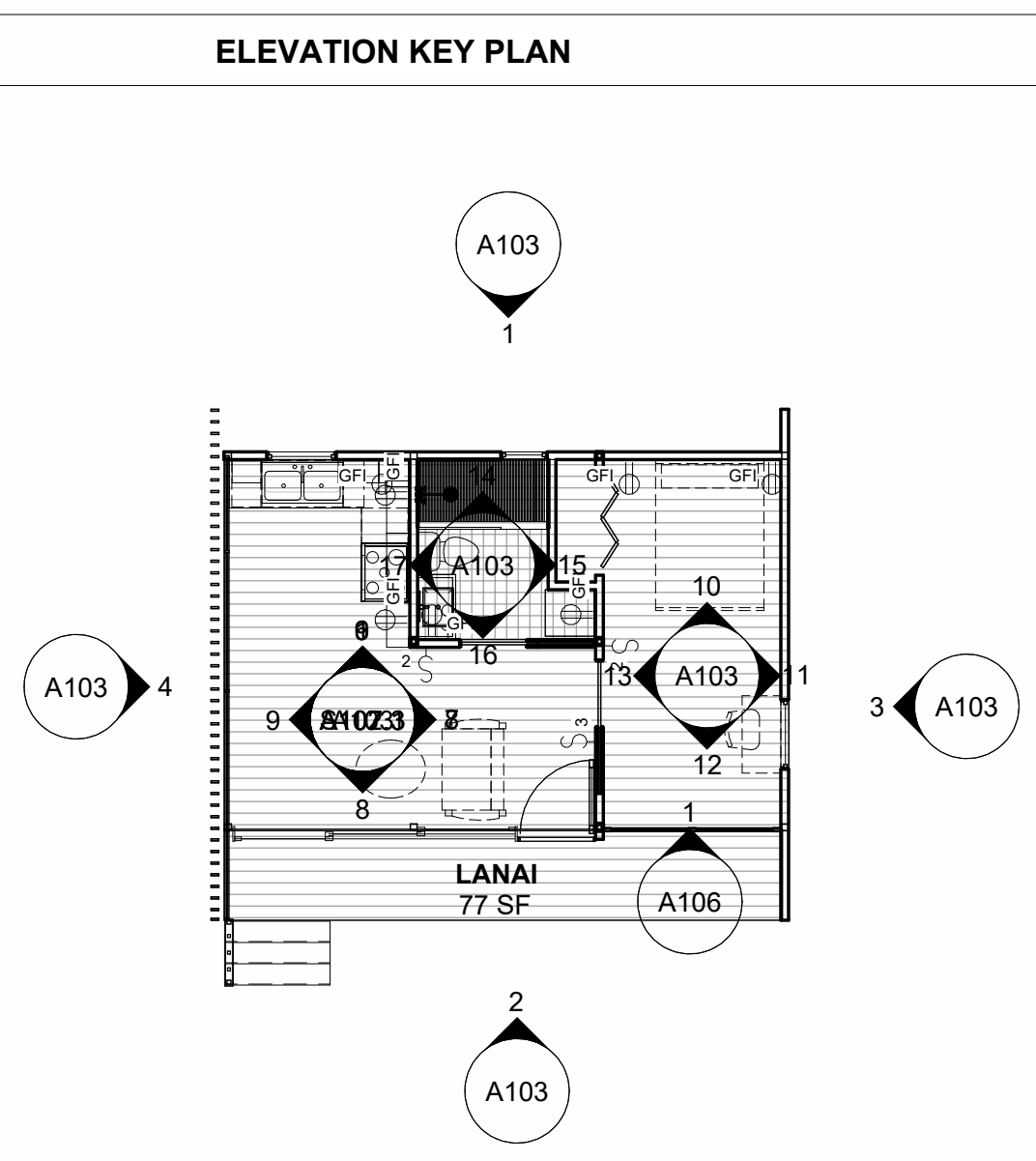
15 BATH B
3/16" = 1'-0"



16 BATH C
3/16" = 1'-0"



17 BATH D
3/16" = 1'-0"



ELEVATION KEY PLAN

- GENERAL NOTES**
- GENERAL CONTRACTOR SHALL VERIFY ALL EXISTING CONDITIONS AND DIMENSIONS AND ANY DISCREPANCIES AND CONFLICTS SHALL BE RESOLVED PRIOR TO PROCEEDING WITH THE WORK.
 - THE CONTRACT DOCUMENT DRAWINGS AND SPECIFICATIONS ARE COMPLEMENTARY AND PROVIDE DESIGN INTENT FOR THE CONSTRUCTION OF THE PROJECT. THE CONTRACT DOCUMENTS MAY NOT INCLUDE EVERY DETAIL OR CONSTRUCTION CONDITION AND THE CONTRACTOR SHALL PROVIDE A COMPLETED STRUCTURE WITHIN THE BASIC SCOPE AND BUDGET OF THE PROJECT.
 - ALL WORK SHALL BE IN CONFORMANCE WITH THE APPLICABLE PLANNING AND BUILDING CODES, LOCAL AMENDMENTS AND ORDINANCES, ADA/AG AND OTHER APPLICABLE REGULATIONS. THE GENERAL CONTRACTOR SHALL MAINTAIN A CLEAN AND ORDERLY WORK SITE AND WASTE MATERIALS SHALL BE REMOVED FROM THE PROJECT SITE IN A TIMELY MANNER.
 - THE GENERAL CONTRACTOR SHALL BE RESPONSIBLE FOR THE TIMELY COORDINATION OF THE WORK AMONG ALL TRADES AND MATERIAL SUPPLIERS TO AVOID CONFLICTS AND DELAYS IN THE PROJECT CONSTRUCTION SCHEDULE.
 - GENERAL CONTRACTOR SHALL COORDINATE ALL MECHANICAL AND ELECTRICAL FITTINGS OR FIXTURES WITHIN REQUIRED AREAS OF SPACES. CONTRACTOR SHALL VERIFY ALL DIMENSIONS IN AREAS TO RECEIVE CASEWORK AND COORDINATE WITH ELECTRICAL AND TELE/DATA FITTINGS.
 - REFER TO FLOOR PLANS FOR WALL TYPE DESIGNATIONS.
 - REFER TO SHEET 003 FOR TYPICAL FIXTURE AND ACCESSORY MOUNTING HEIGHTS.
 - PROVIDE SHEET METAL OR SOLID BACKING AS REQUIRED TO SUPPORT WALL CABINETS, GRAB BARS, RAILINGS, AV EQUIPMENT AND OTHER ACCESSORIES THAT REQUIRE SUPPORT. VERIFY LOCATIONS PRIOR TO INSTALLATION OF GYPSUM BOARD.
 - ALIGN ALL MATERIAL CONTROL AND EXPANSION JOINTS VERTICALLY AND HORIZONTALLY WITH ADJACENT WALL DOOR, RELITE AND LOUVER. ALL CABINETS TO HAVE TWO ADJUSTABLE SHELVES, U.O.N.
 - ALL CAULKING AND SEALANT ARE TO MATCH COLOR OF ADJACENT WALL, TYPICAL, U.O.N.
 - SEE FINISH PLAN FOR WALL FINISHES
 - ALL ELECTRICAL OUTLETS AND LIGHT FIXTURES SHOWN FOR REFERENCE ONLY. SEE ELECTRICAL.
 - SEE FINISH PLAN FOR CASEWORK FINISHES

KEYNOTES

Key Value	Keynote Text
N016	Millwork: new cabinets, hardware and countertops.
N017	Millwork: new wall mounted cabinets.
N048	Wall tile: new wall tile.
N143	Exhaust Hood: new stainless steel exhaust hood.
N149	Kitchen equipment: kitchen range.
N221	Plumbing fixture: new fixtures, see plumbing schedule.
N227	Plumbing fixture: new toilet, see plumbing dwgs.
N261	Lighting fixture: new fixtures, wiring and switches.
N264	Electrical Fixture: Duplex outlet, see electrical drawings.
N267	Electrical Fixture: Light switch double.
N268	Electrical Fixture: Light switch tripple.
TA-13	Hanging mirror.

ATELIER5DeSIGN

KOKEE ADU
 LOCATION: 2135 Makiki Heights
 Drive, Honolulu, HI 96822
 TMK: 250190190000

Project Number	Date	Author	Checker
190420	10/27/20		

Revisions	No.	Date	Description

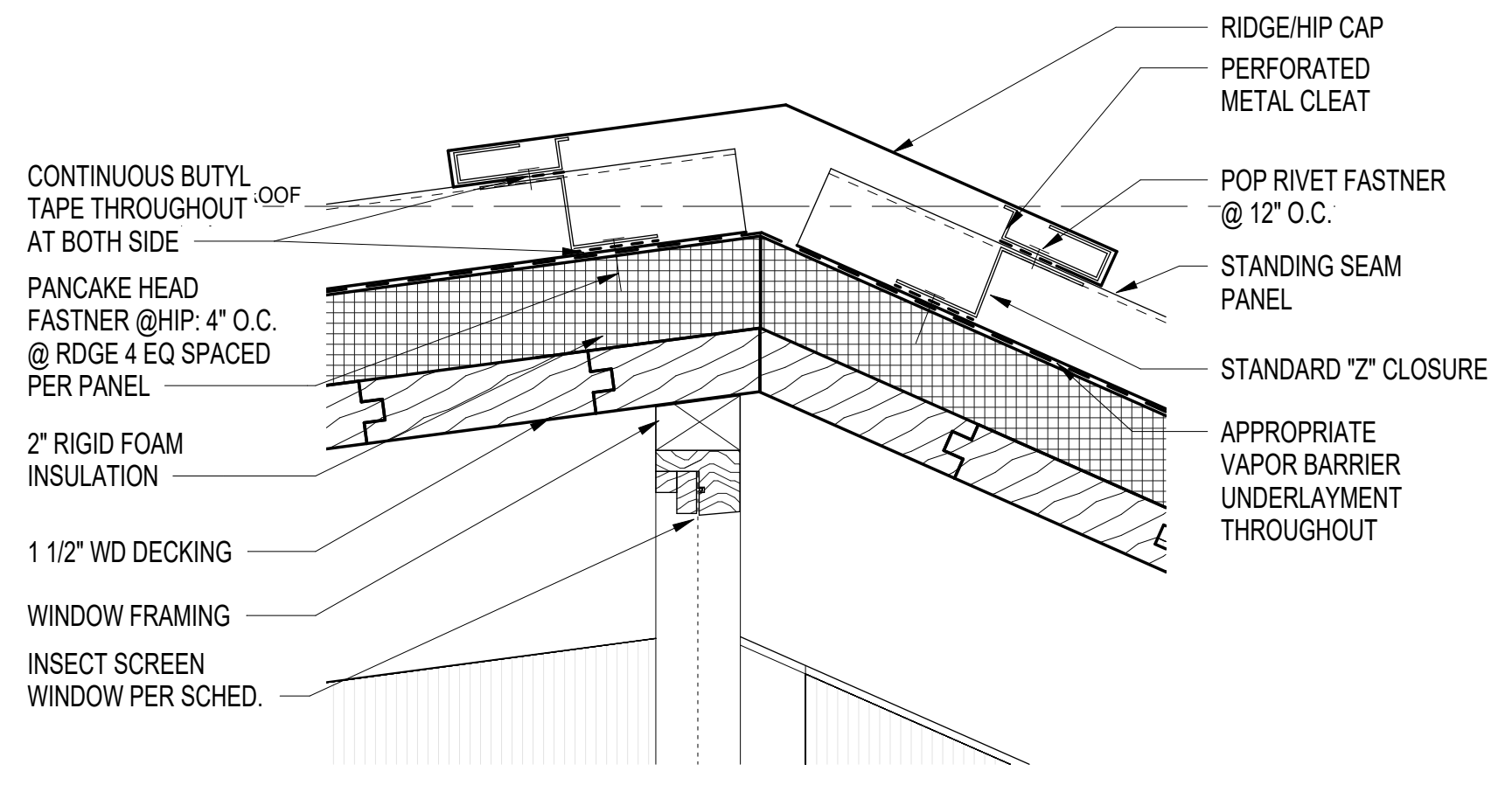
ELEVATIONS

A103

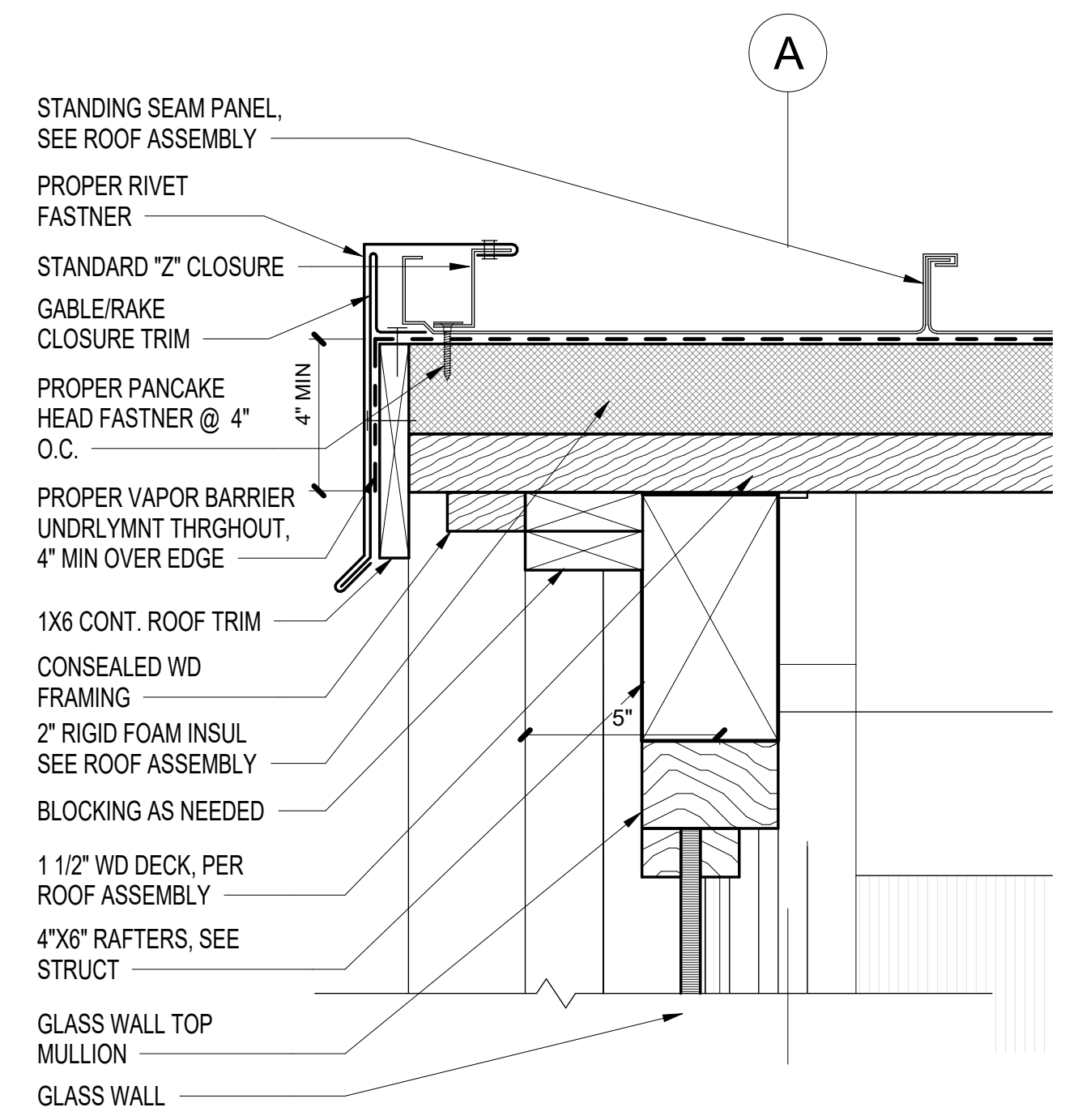
Scale: As indicated

3/13/2023 12:23:08 PM

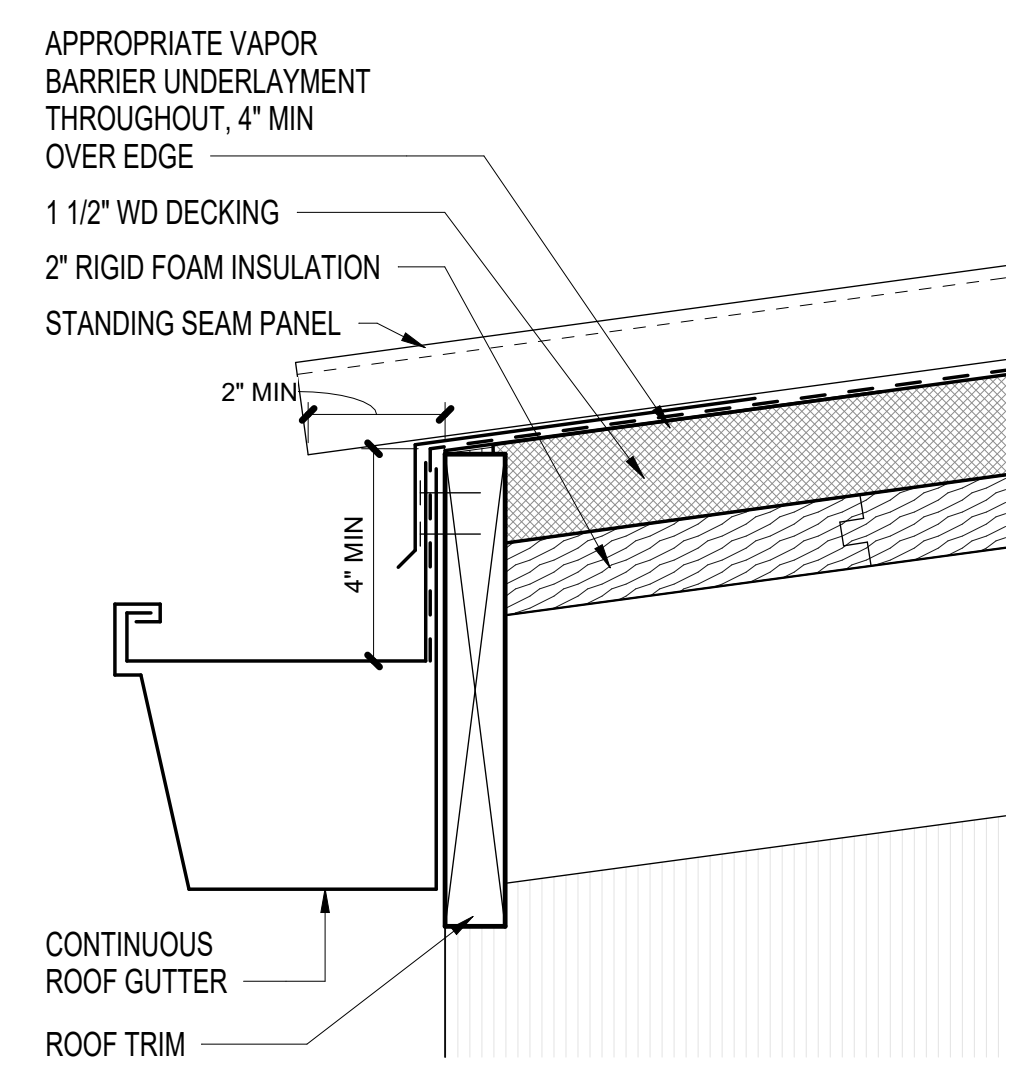
2
1
0 25 5



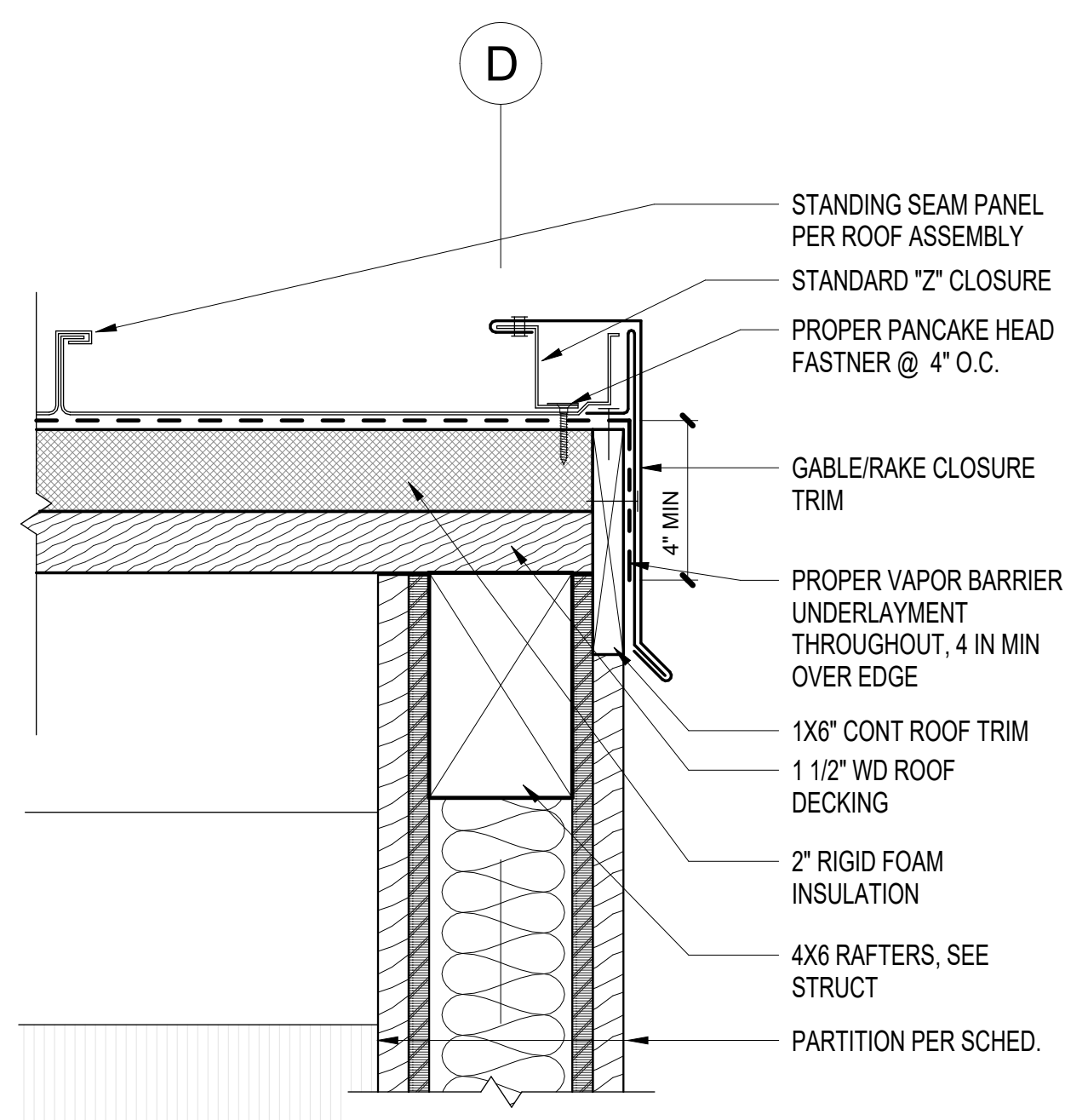
3 ROOF RIDGE/HIP DETAIL
3" = 1'-0"



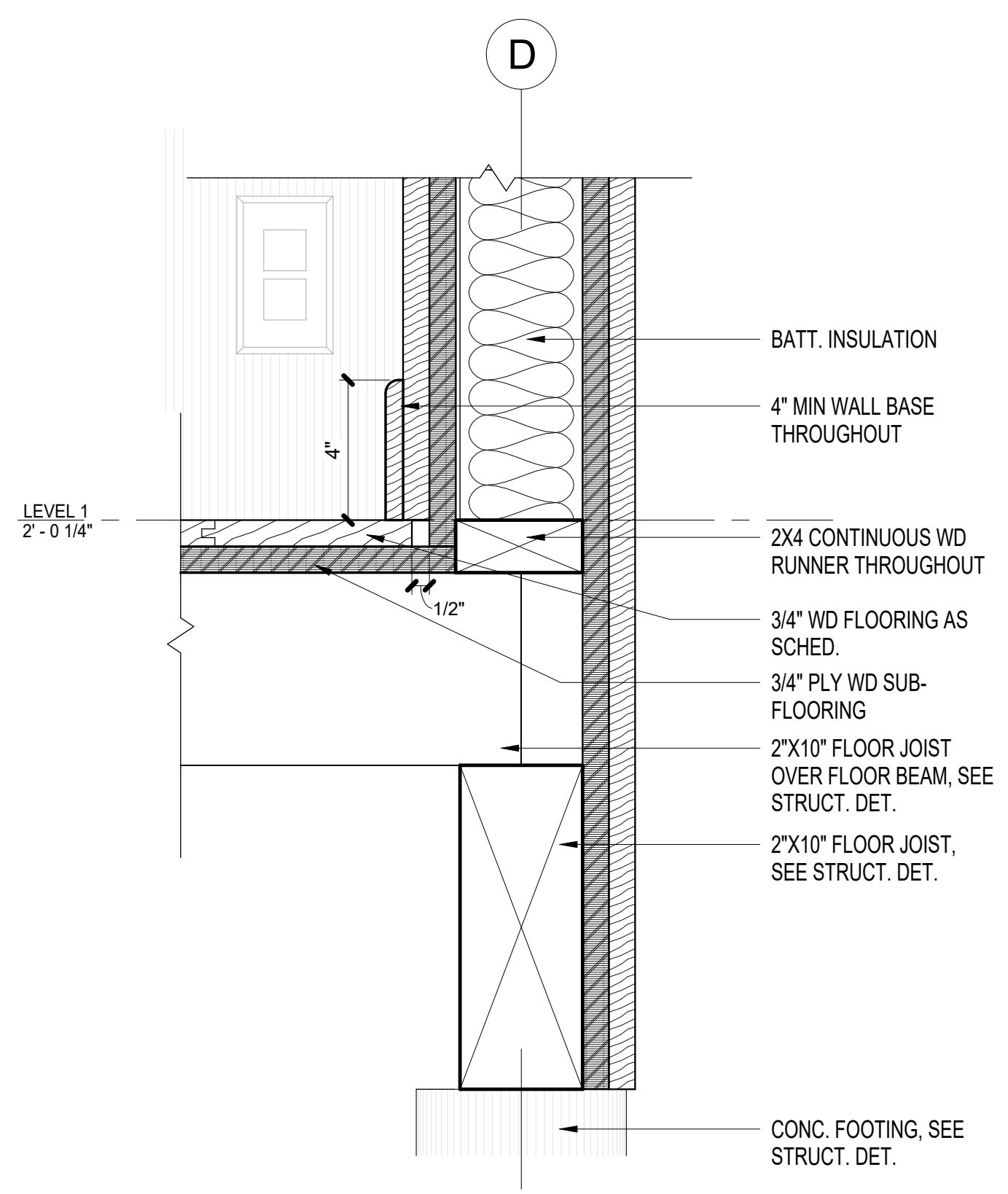
6 SCREEN WALL TO ROOF TRANSITION DETAIL
3" = 1'-0"



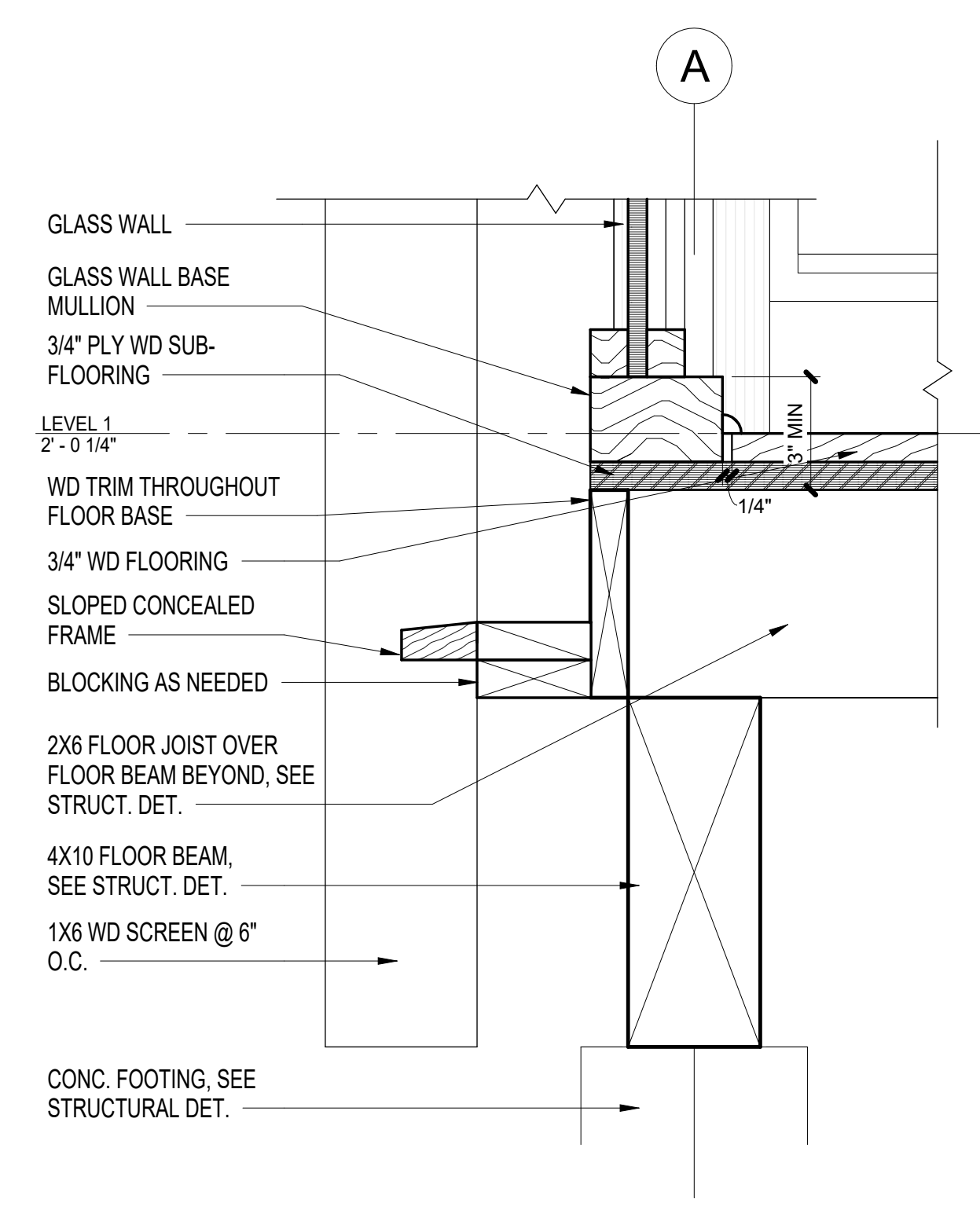
9 ROOF GUTTER DETAIL
3" = 1'-0"



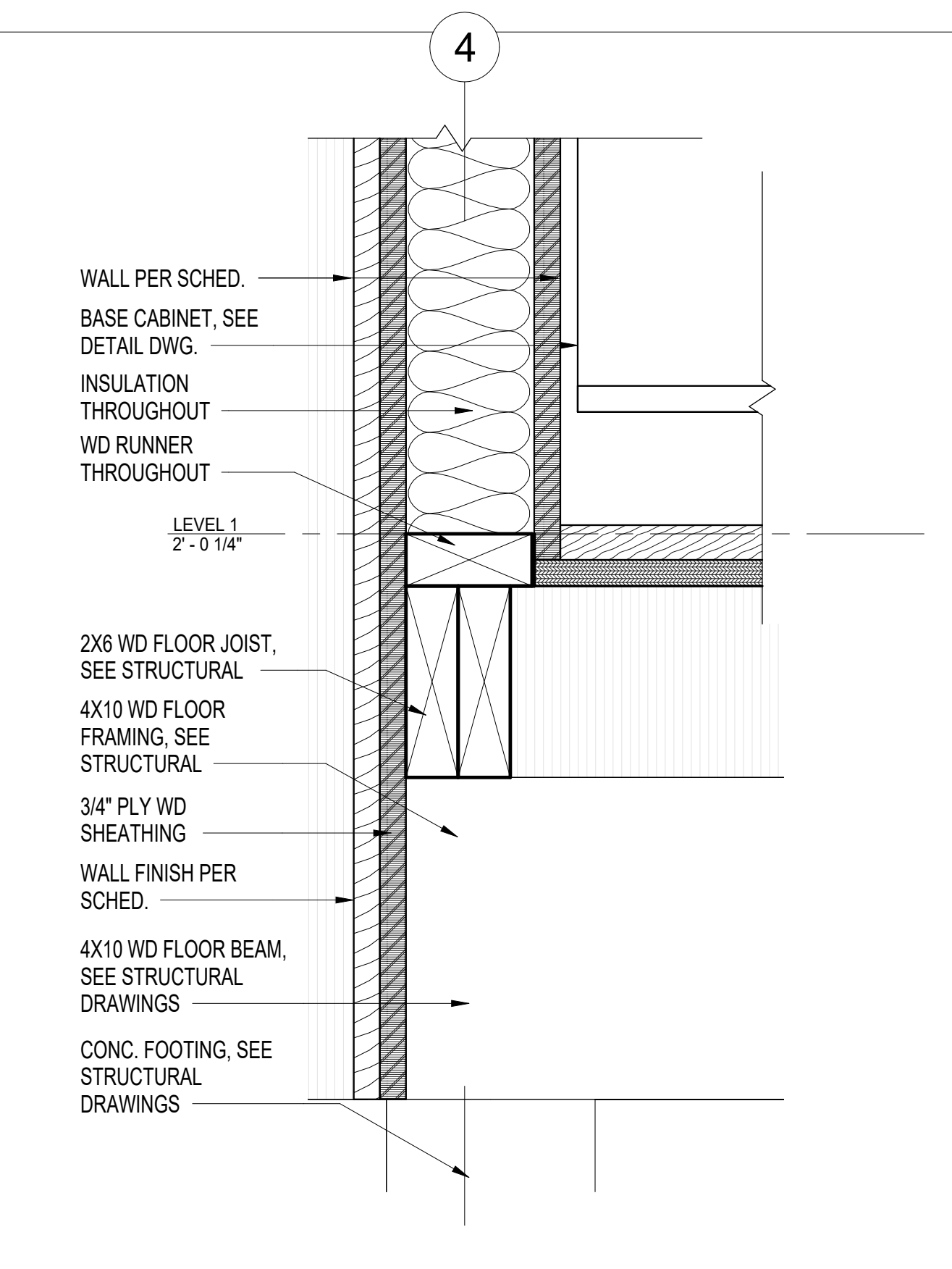
1 TYP. WALL TO ROOF TRANSITION DETAIL
3" = 1'-0"



2 EAST WALL TO FLOOR TRANSITION DETAIL
3" = 1'-0"



7 WEST WALL TO FLOOR TRANSITION DETAIL
3" = 1'-0"



5 NORTH WALL TO FLOOR TRANSITION DETAIL
3" = 1'-0"

ATELIER5DeSIGN

KOKEE ADU
LOCATION: 2135 Makiki Heights
Drive, Honolulu, HI 96822
TMK: 250190190000

Project Number	Date	Drawn By	Checked By	Revisions	
				No.	Date
190420	10/27/20	Author	Checker		

DETAILS

A107.1

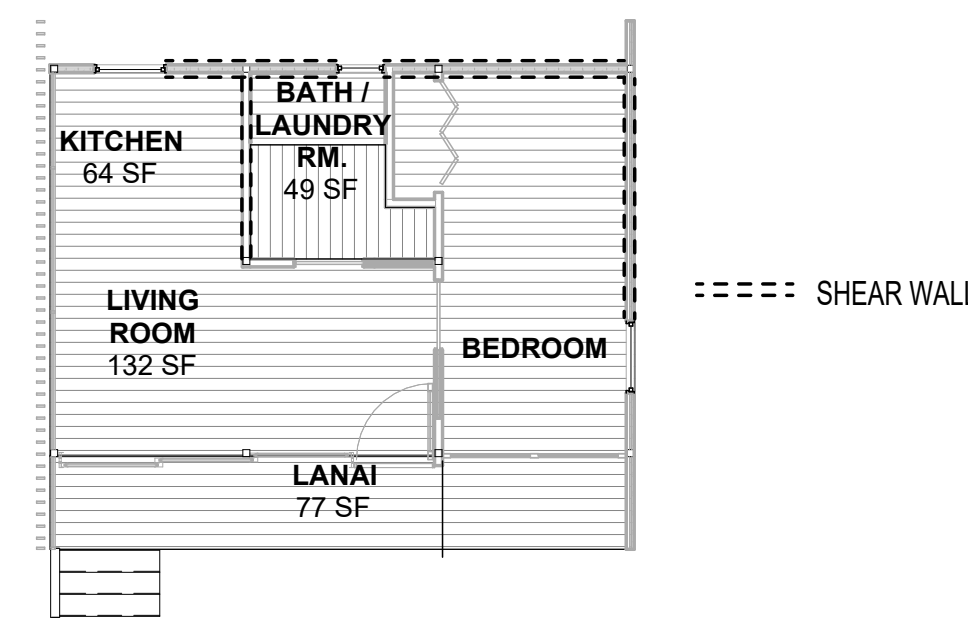
Scale 3" = 1'-0"

3/13/2023 12:23:16 PM

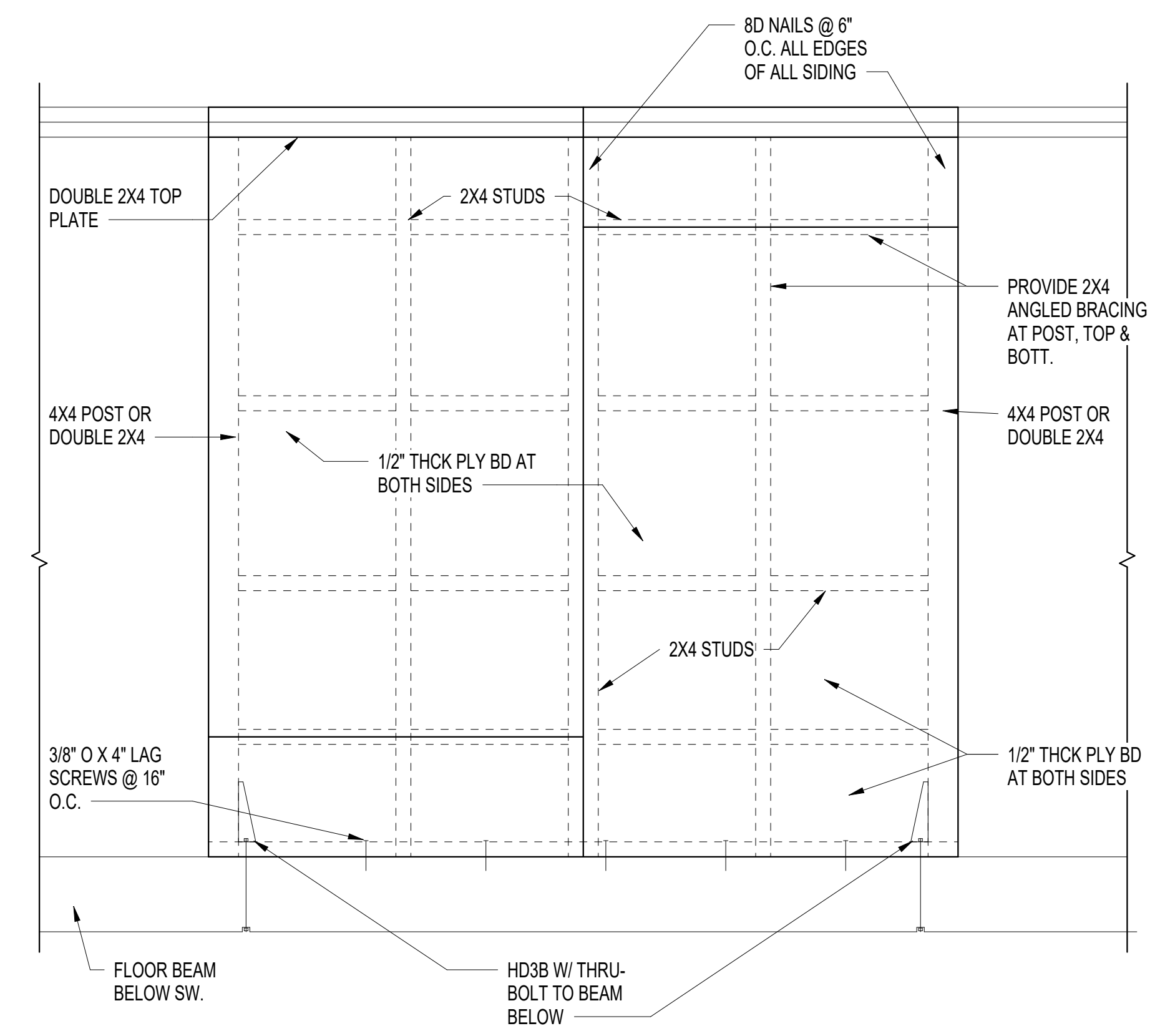
0 0.25 0.5 1 2

ATELIER5DeSIGN

KOKEE ADU
 LOCATION: 2135 Makiki Heights
 Drive, Honolulu, HI 96822
 TMK: 250190190000



② FLOOR PLAN SHEAR WALL
 1/8" = 1'-0"



① TYP. SHEAR WALL DETAIL
 3/4" = 1'-0"

Project Number	Revisions	No.	Description	Date
190420				
Date	10/27/20			
Drawn By	Author			
Checked By	Checker			

DETAILS

S102.2

Scale: As indicated